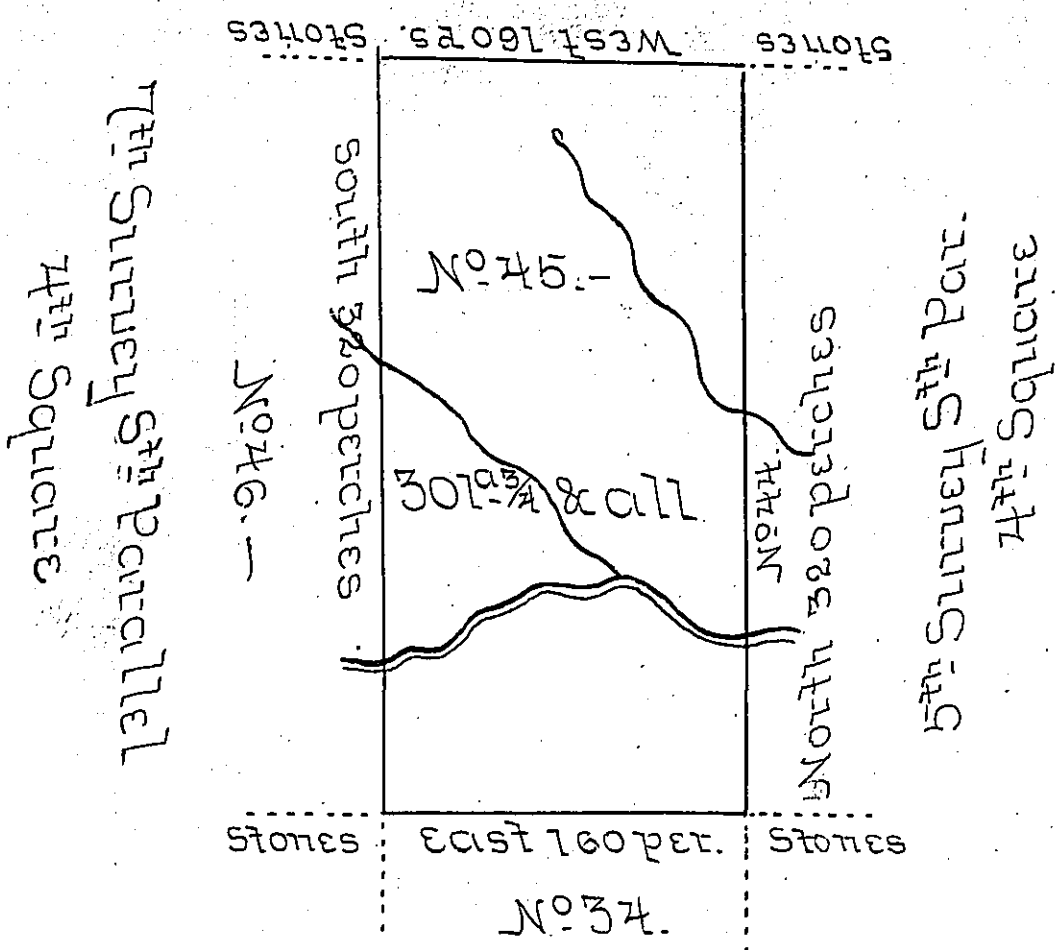


Other part of Dist. No. 1
3d 4 Mile Square



6th Survey 2d Par. 4th Square

Situated on Two Mile Run a Branch of Beaver River
 that empties into Beaver on the West Side 2 Miles above
 Fort Mackintosh in District No. 1 being the 6th Survey
 Westward of the Division line of said District & No. 2 in
 the 5th Parallel south of the 3d 4 Mile Square from
 the Northern Boundary of that Tract of Country
 appropriated by Law for the Redemption of the
 Certificates of Depreciation &c and surveyed in
 the Month of June 1755 Pursuant to Instructions
 from John Lukens Esq. Surveyor General of the
 State of Pennsylvania

PE Alexander McClean Dep. H.

To John Lukens Esq. of District No. 1
Surveyor General

IN TESTIMONY that the above is a copy of the original remaining on file in
 the Department of Internal Affairs of Pennsylvania, made
 conformably to an Act of Assembly approved the 16th day of
 February, 1833, I have hereunto set my Hand and caused
 the Seal of said Department to be affixed at Harrisburg,
 this twenty fifth day of October 1905.

A. C. P. [Signature]
 Secretary of Internal Affairs.